



Available finish: White

Read these instructions before commencing installation. Please give these instructions to the owner/occupier after installation to retain for future reference/maintenance.

IP65 240VAC~50Hz 0.5m GU10 2x 35W Max.

These fittings are Class I and must be Earthed

Important Information

It is recommended that these luminaires are installed and fitted by a qualified electrician ensuring the installation complies with current IEE wiring regulations & local building control. These products are designed for connection to a 240VAC~50Hz supply. Any faulty, broken or damaged luminaires should be replaced immediately. KSR will not accept responsibility for any claims arising from a poor installation. Please Note: The limited warranty shall be deemed null and void in the following circumstances: Failure by the installer, end user or any third party to exercise caution to protect any covered product or part from outside damage, humidity conditions, fluctuations in the electrical system or physical abuse as well as failure related to workmanship in the installation of the products or parts.

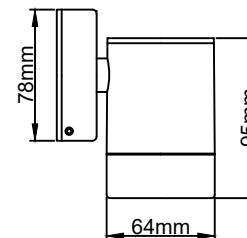
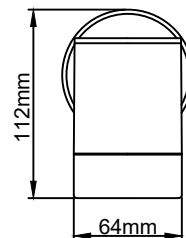
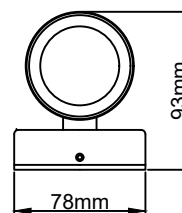
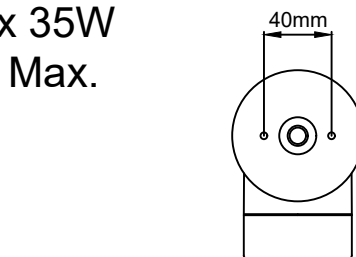
Important User Advice

Always safely isolate the mains supply before installing, servicing or lamp replacement. Please note this luminaire is dimmable using suitable dimmable lamps. General maintenance and cleaning should be performed at least quarterly. Clean product outer using a damp cloth, the glass can be cleaned with hot soapy water, dried and buffed to a shine. KSR recommend protecting from exposure to natural elements in the form of a non-abrasive water repellent protection (car wax). Grease screws and nuts with a suitable waterproof repellent will ensure the product gives you a long lasting trouble free life/finish. At the end of life the luminaire is classed as WEEE under directive 2014/30/EU and should be disposed of in accordance with local legislation.

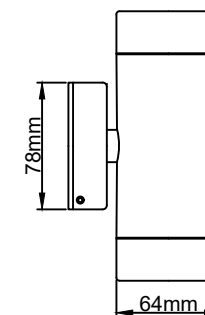
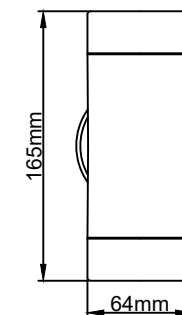
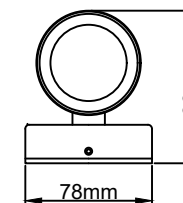
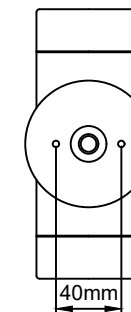
Installation Procedure

Familiarize yourself with the luminaire, loosen the 3 grub screws that secure the main fitting to the base plate. Offer the base plate up to a suitable surface and mark the two fixing points. Once drilled, dress the mains supply cable through the grommet ensuring a water tight seal around the cable and secure to the wall. Terminate the fixed wiring into the terminal block, following the guide and/or the markings on the fitting. Ensure the main gasket is seated correctly on the base plate and place the fitting onto it, take care not to snag any of the wiring, space is limited so care should be taken. Ensure to grease the thread of the grub screws using a suitable water repellent grease, refit and tighten. Unscrew and remove the lamp cap(s) and fit a suitable GU10 lamp(s), if using GU10 LED lamp(s) ensure they are suitable for enclosed housings. Refit the cap we recommend using a suitable water repellent grease to ease of future lamp changes, check the seal is in place and undamaged, fully tighten the cap(s) to ensure a good water tight seal ensuring the seals are not squeezed out of place. Turn on the power and test the luminaire.

Note: These luminaires are not suited to Loop In/Out wiring.



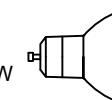
KSR1390



KSR1391

Lamp Details

Lamp Cap: GU10
Max Wattage: 35W



Suitable for Retrofit LED Lamps



KSR Lighting Aftersales: 023 92 674343
E-mail: aftersales@ksrlighting.com