




Available finish:- Black

Read these instructions before commencing installation. Please give these instructions to the owner/occupier after installation to retain for future reference/maintenance.

IP65    240V~50Hz 46W max.

These fittings are Class II and do not require an Earth

**Important Information**

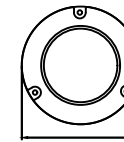
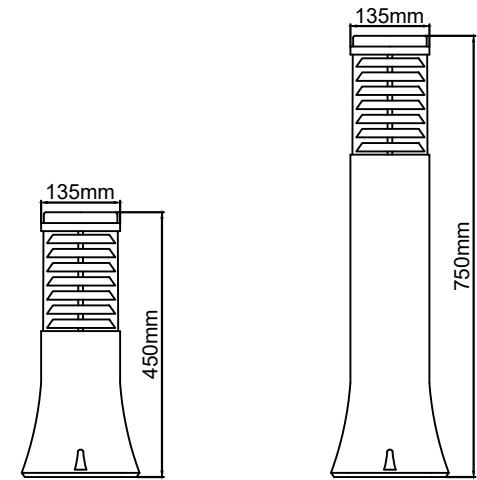
It is recommended that these luminaires are installed and fitted by a qualified electrician ensuring the installation complies with current IEE wiring regulations & local building control. These products are designed for connection to a 240V~50Hz supply. Any faulty, broken or damaged luminaires should be replaced immediately. KSR will not accept responsibility for any claims arising from a poor installation. Please Note: The limited warranty shall be deemed null and void in the following circumstances: Failure by the installer, end user or any third party to exercise caution to protect any covered product or part from outside damage, adverse temperature (normal operating ambient temperature -15 ~ +40°C), humidity conditions, fluctuations in the electrical system or physical abuse as well as failure related to workmanship in the installation of the products or parts.

**Important User Advice**

Always switch off mains supply before servicing lamp changes and maintenance. Please ensure that a suitable maintenance schedule is performed including greasing any exposed metal parts and cleaning with a non-abrasive cleaner to ensure the product gives you a long lasting trouble free life.

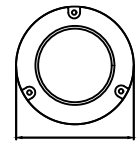
**Installation Procedure**

- Safely isolate the mains supply before installation.
- Remove the head by loosening the grub screw and twisting anticlockwise.
- Route the cable through the cable gland (8mm-12mm) and terminate wiring as per Figure 1.
- Install suitable lamp not exceeding the maximum wattage.
- Refit the head in reverse of removal ensuring the seal is clean, in place and undamaged, grease the grub screw and tighten.
- Tighten the cable gland ensuring a water tight connection.
- Secure the bollard in place using suitable fixings for the application.
- Turn mains supply on and test luminaire.
- Never touch a hot lamp.



200mm

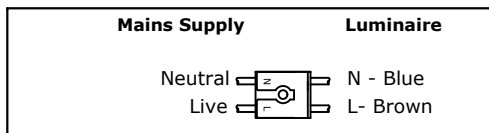
**KSR1180**



200mm

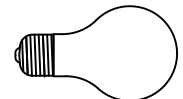
**KSR1181**

Fig.1



**Lamp Details**

Lamp Cap: E27 GLS  
Wattage: 46W (max)



KSR Lighting recommend only branded lamps  
For example: Sylvania, GE, Philips or Osram



KSR Lighting Aftersales: 023 92 674343  
E-mail: aftersales@ksrlighting.com