



Available finish:- Black

Read these instructions before commencing installation. Please give these instructions to the owner/occupier after installation to retain for future reference/maintenance.

IP65 240V~50Hz 20W

These fittings are Class I and must be Earthed

Important Information

It is recommended that these luminaires are installed and fitted by a qualified electrician ensuring the installation complies with current IEE wiring regulations & local building control. These products are designed for connection to a 240V~50Hz supply. Any faulty, broken or damaged luminaires should be replaced immediately. KSR will not accept responsibility for any claims arising from a poor installation. Please Note: The limited warranty shall be deemed null and void in the following circumstances: Failure by the installer, end user or any third party to exercise caution to protect any covered product or part from outside damage, adverse temperature (normal operating ambient temperature -15 ~ +40°C), humidity conditions, fluctuations in the electrical system or physical abuse as well as failure related to workmanship in the installation of the products or parts.

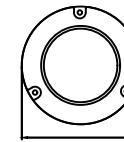
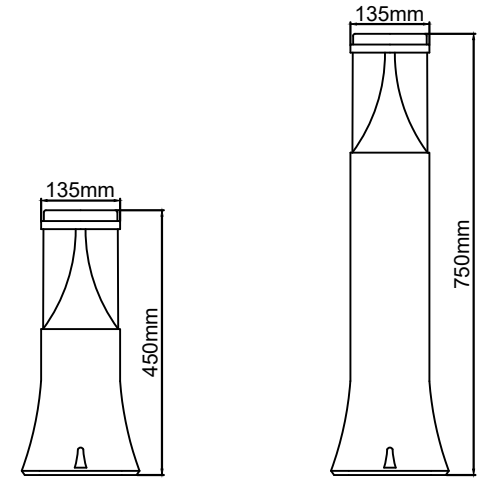
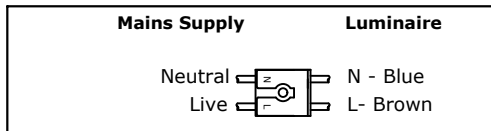
Important User Advice

Always switch off mains supply before servicing and maintenance. Please ensure that a suitable maintenance schedule is performed including greasing all moving parts and protection from exposure to natural elements in the form of a non-abrasive cleaner/water repellent protection to ensure the product gives you a long lasting trouble free life.

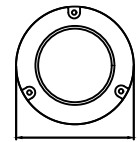
Installation Procedure

- Safely isolate the mains supply before installation.
- Remove the head by loosening the grub screw and twisting anticlockwise.
- Route the cable through the cable gland (8mm-12mm) and terminate wiring as per Figure 1.
- Select the LED colour you require using the switch on the driver casing.
- Refit the head in reverse of removal ensuring the seal is clean, in place and undamaged, grease the grub screw and tighten.
- Tighten the cable gland ensuring a water tight connection.
- Secure the bollard in place using suitable fixings for the application.
- Turn mains supply on and test luminaire.
- Do Not** expose luminaire to areas where high pollution and saline maybe present.

Fig.1



200mm
KSR1182



200mm
KSR1183

Lamp Details

Lamp: Dedicated LED
 Wattage: 20W
 Colour: Switchable 3000K - 4000K - 6000K
 3000K Lumen Output: 1528 lumens
 4000K Lumen Output: 1724 lumens
 6000K Lumen Output: 1535 lumens
 CRI: Ra>82

The light source of this luminaire is not replaceable; when the light source reaches its end of life the whole luminaire shall be replaced

KSR Lighting Aftersales: 023 92 674343
 E-mail: aftersales@ksrlighting.com

