

# Nava LED Wall Light

*Residential Lighting*



## Product Information

The Nava LED wall light range is available with 3 different Shade finishes and are ideal for Domestic applications.

With a common base, Shade finishes can be changed with ease allowing you to change the look of your light fixture when you want.

Our Nava LED Wall light is the little brother of the Phily, Brooks & Bridge LED Wall light Range, that all come complete with a 3-year warranty.



## Product Features

- 3-year warranty
- Class I
- Available in 3000K
- High CRI: Ra92
- Non-Dimmable
- Available With 3 different Shade Finishes – White, Black & Brushed Brass
- L70 – 30,000hrs

# Product Specification

Product Code	Product Description	Wattage (W)	CCT (K)	Lumens (lm)	CRI (Ra)	Energy Efficiency Class	Protection Class
KSR7320	Nava 5W 3000K LED Wall Light Base	5	3000	405	92	F	I
<b>Shade options</b>							
KSR7321WH	Nava Shade Only – White						
KSR7321BLK	Nava Shade Only – Black						
KSR7321BB	Nava Shade Only – Brushed Brass						

Nominal voltage	220~240VAC
Operating frequency	50Hz
Circuit Wattage	5w including driver losses
Circuit Current	0.09A
Driver Current Rating	500mA
PFC	0.8
In Rush Current	0.5A Max Peak
Ambient temperature range	0°C to +30°C
IP rating	20

## Construction

Body:	Aluminium
Trim/Bezel:	Aluminium
Lens:	Clear Polycarbonate

## Standards

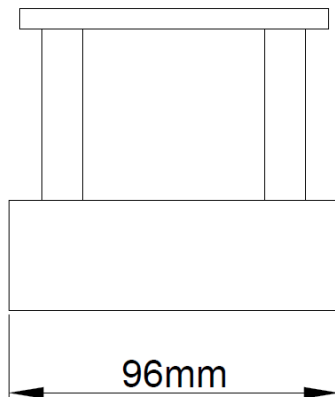
BSEN60598-1:2021      Luminaires – Part 1: General requirements and tests

## In Conformity with

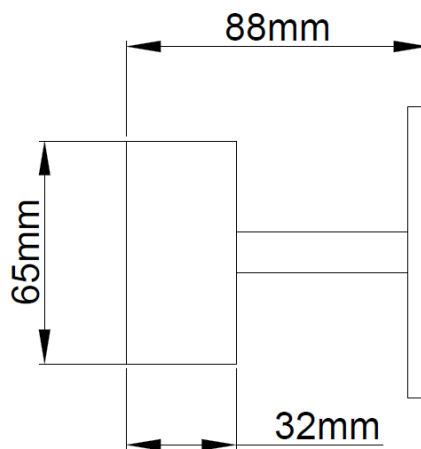
LVD	Low voltage directive 2014/35/EU
EMC	Electromagnetic compatibility directive 2014/30/EU
ERP	Energy related products directive 2019/2020/EC
RoHS	Restriction of hazardous substances 2015/863/EU

# Product Dimensions

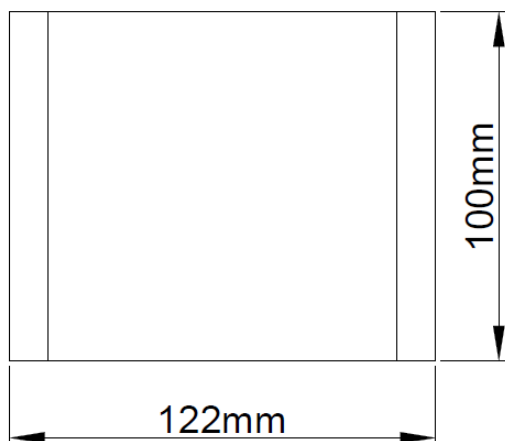
**KSR7320  
Top View.**



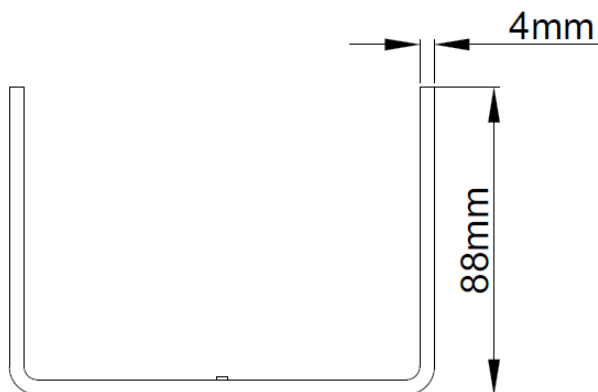
**KSR7320  
Side View.**



**KSR7321  
Front View.**



**KSR7321  
Top View.**



KSR Lighting is constantly developing and improving its products. For this reason, all product descriptions in this data sheet are intended as a general guide, and KSR may change specifications from time to time in the interest of product development, without prior notification or public announcement. All descriptions in this data sheet present only general particulars of the goods to which they refer and shall not form part of any contract. Data in this guide has been obtained in controlled experimental conditions. However, KSR Lighting cannot accept any liability arising from the reliance on such data to the extent permitted.