



Read these instructions before commencing installation. Please give these instructions to the owner/occupier after installation to retain for future reference/maintenance.

IP20 0.3m 240V~50Hz 11W-60W

These fittings are Class I and must be Earthed

Important Information

It is recommended that these luminaires are installed and fitted by a qualified electrician ensuring the installation complies with current IEE wiring regulations & local building control. These products are designed for connection to a 240V~50Hz supply. Any faulty, broken or damaged luminaires should be replaced immediately. KSR will not accept responsibility for any claims arising from a poor installation. Please Note: The limited warranty shall be deemed null and void in the following circumstances: Failure by the installer, end user or any third party to exercise caution to protect any covered product or part from outside damage, adverse temperature (normal operating ambient temperature 0 ~ 35°C), humidity conditions, fluctuations in the electrical system or physical abuse as well as failure related to workmanship in the installation of the products or parts.

Important User Advice

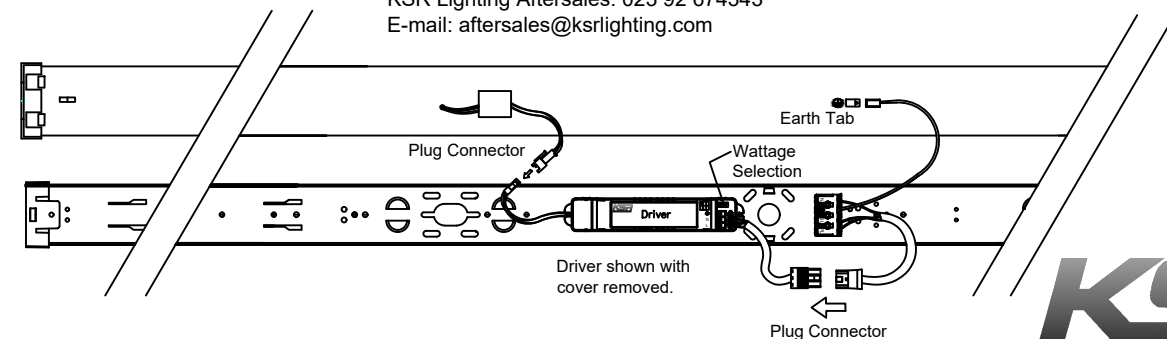
Always switch off mains supply before installing/servicing. This luminaire is suitable for indoor use only and should not be fitted to damp or wet surfaces such as freshly plastered or painted ceilings. Do not use Megger or similar high voltage instruments. Due to the fact this luminaire contains electronic components that maybe damaged by high test voltages, they must be disconnected from the circuit before testing. To prevent damage to the driver, do not mix with conventional magnetic ballasts on the same electrical circuit. At the end of life the luminaire is classed as WEEE under directive 2014/30/EU and should be disposed of in accordance with local legislation.

Installation Procedure

Familiarize yourself with the luminaire/installation procedure and ensure the power is safely isolated before installing the luminaire. Separate the LED Top Diffuser plate from the main body by pulling apart. The wiring and support straps are disconnected for ease of installation. Offer the main body up to the ceiling and mark the fixing points. If using surface conduit ensure the beza boxes are at 600mm centres. Drill and secure the main body in place, dressing the supply cable through either of the three rear entry points or end caps. Set the Wattage via the switch & dip switch (ONLY WITH FITTING SWITCHED OFF) Connect the plug & play connections & mains wiring as per the guide below & overleaf (Fig.1). Offer up the LED Top Diffuser and connect the two support straps in the main body to the top diffuser. Connect the LED supply cable and earth connections, then snap the Top diffuser onto the main body, ensuring it is properly located along the whole length and that no cables are trapped. Turn on the power and test the luminaire.

LEDs are an inductive load. To avoid unwanted MCB tripping it may be necessary to uprate your breakers.

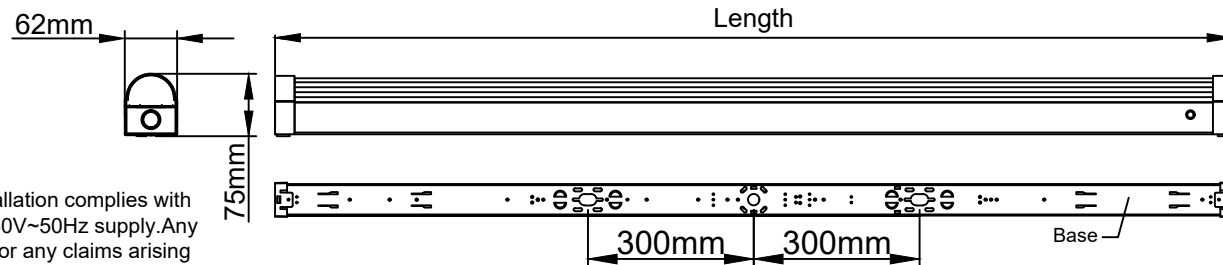
KSR Lighting Aftersales: 023 92 674343
E-mail: aftersales@ksrlighting.com



This product contains a light source of energy efficiency class E
The Control Gear in this product can be replaced by a professional.

KSR Lighting Ltd, Optimum House, Beeding Close, Southern Cross Trading Estate, Bognor Regis, West Sussex, PO22 9TS.

Available finish: White Only



Product Code	Description	Dimensions L x W x H	CCT (K)	Wattage	Lumens
KSR98310	Navara X3-4ft	1170mm x 62mm x 75mm	4000K	11W	1590
				14W	1975
				17W	2390
				20W	2835
				EM Mode*	290
KSR98311	Navara X3-4ft	1170mm x 62mm x 75mm	4000K	21W	3020
				27W	3875
				32W	4570
				38W	5335
				EM Mode*	290
KSR98312	Navara X3-5ft	1460mm x 62mm x 75mm	4000K	18W	2590
				22W	3095
				27W	3795
				32W	4495
				EM Mode*	290
KSR98313	Navara X3-5ft	1460mm x 62mm x 75mm	4000K	29W	4075
				36W	5065
				44W	6285
				52W	7285
				EM Mode*	290
KSR98314	Navara X3-6ft	1730mm x 62mm x 75mm	4000K	22W	3155
				28W	4030
				34W	4765
				40W	5615
				EM Mode*	290
KSR98315	Navara X3-6ft	1730mm x 62mm x 75mm	4000K	33W	4635
				42W	5890
				51W	7150
				60W	8425
				EM Mode*	290

*When used with KSR98189 - Non Self-Test / Self-Test Plug & Play Emergency Pack
KSR98195 - Plug & Play On/Off Microwave Sensor Pack - Also Available



Available finish: White Only

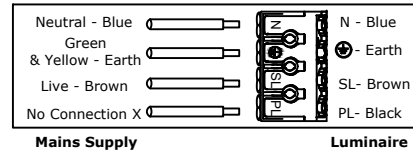
Read these instructions before commencing installation. Please give these instructions to the owner/occupier after installation to retain for future reference/maintenance.

IP20 0.3m 240V~50Hz 11W-60W

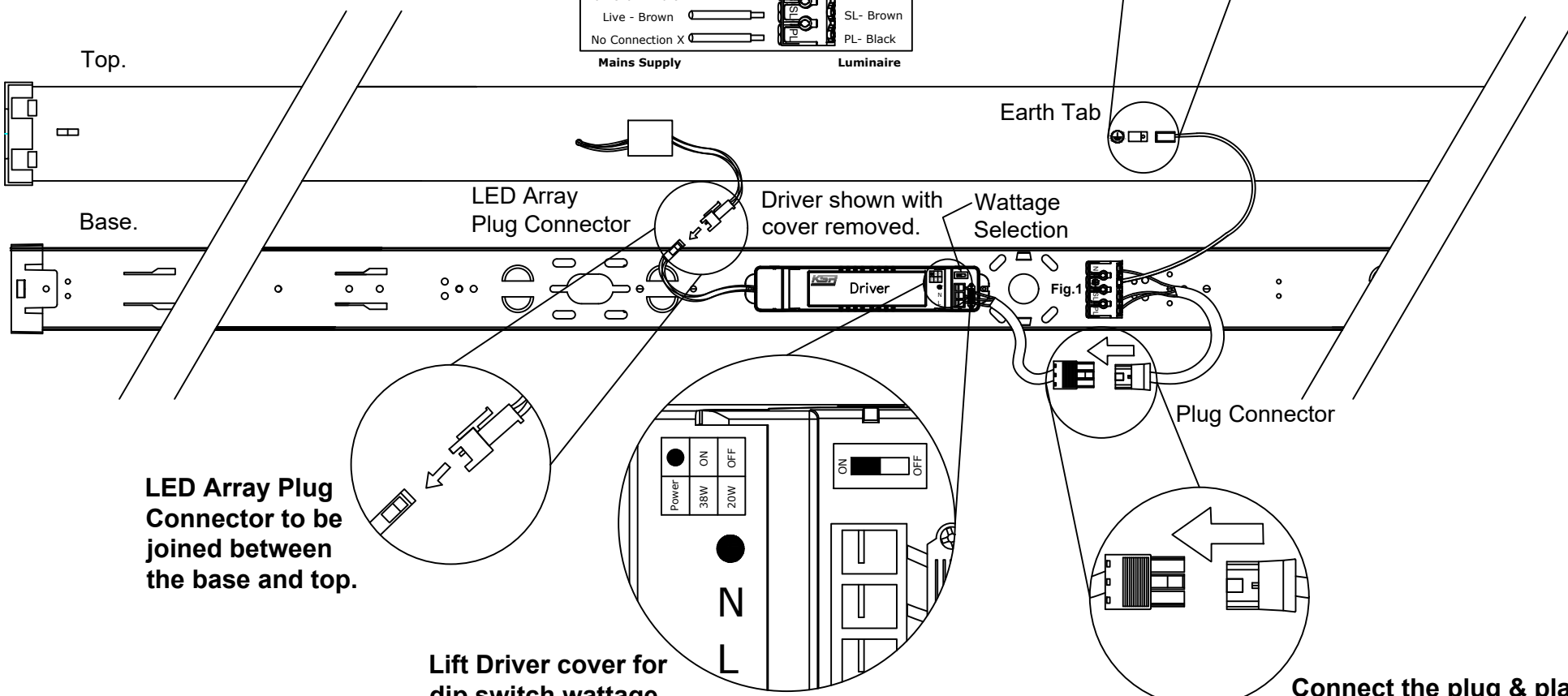
These fittings are Class I and must be Earthed

Connect the mains supply as per below (Fig.1), leaving the PL terminal free.

Fig.1



Ensure the Earth cable from the base is fitted correctly onto the Earth tag on the top part of the luminaire.



LED Array Plug Connector to be joined between the base and top.

Lift Driver cover for dip switch wattage selector and choose your desired wattage.

Connect the plug & play connection between the driver & connector block.

